

**IPSA 2021 – Panel GS06.08 Understanding
Rodrigo Duterte's Governance in the
Philippines – July 15, 2021**

**■ Mining and Extractive Industries
Under the Duterte
Administration**

**Dominique Caouette
Université de Montréal**

Context: On-going research projects



The political economy of resources and violence in the Philippines: a comparative and historical study of three peripheral regions (2016-2021)

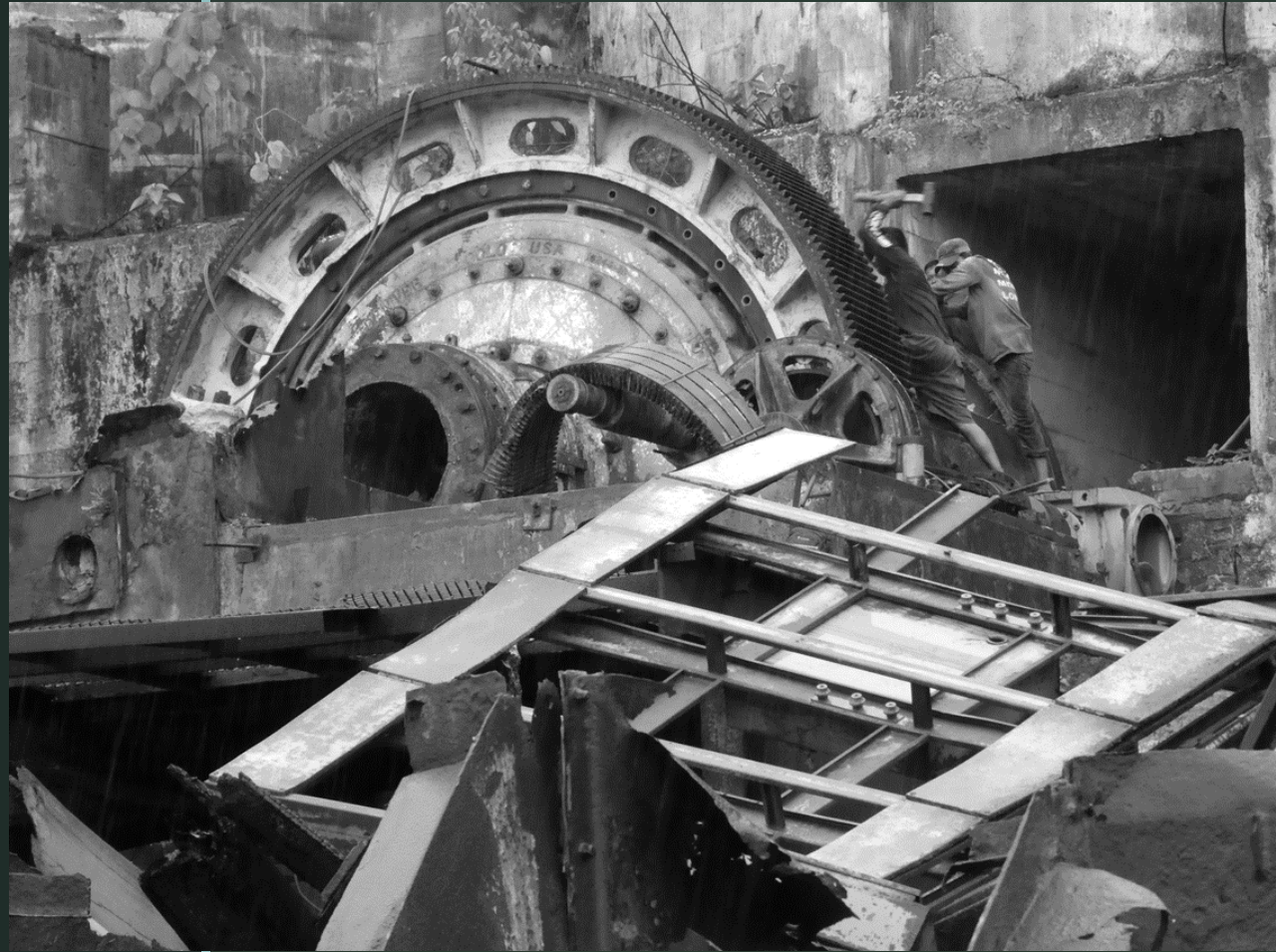
<https://www.redtac-observatoire.org/>

Global minerals and local communities: the challenge of corporate social responsibility (2018-2024) <https://globalminerals-localcommunities.ca/>



Research questions:

- What have been the impacts of his administration on specific areas, such as local government, environment, privatization and extractive industries?
- Can we see emerge some recurring patterns in his actual policy-making and implementation?



Argument:

- As for other policy areas – Duterte's governance has been characterized by shifts and lack of predictability:
- From a reformist populist platform in the extractive sector to a neo-extractivist policies and finally back to neoliberal policies



Periods:

- From the electoral campaign, nomination of Regina Lopez as Secretary of DENR + moratorium & Audits (2016-May 2017)
- Failure to get Lopez's nomination approved and replacement by Roy Cimatu – (May 2017 - ± early 2019)
- Neoliberal policies and authoritarian repression: “getting rid of the reds’ (2019-...) : extrajudicial killings of environmental and anti-mining activists + repression on media

On-going case studies

- Rio Tuba, Bataraza, Palawan
- Citinickel and Narra Nickel, Narra, Palawan
- Maricalum mining corp and Philex, Hinoba-and, Sipalay, Negros
- Tampakan Gold Copper Project, South Cotabato
- Agata Mining, Agusan del Norte



Republic of the Philippines

Department of Environment and Natural Resources

MINES AND GEOSCIENCES BUREAU

MGB Compound, North Avenue, Diliman, Quezon City

Landline No. (63-2) 9209120; Fax No. (63-2) 9201635; Email: central@mgb.gov.ph

PH Finest on Best Mining Practices

Duterte Governance

Similar to other neo-populist leader (Bolsonaro, Erdogan, Trump), a lot has resolved on discursive practices grounded on personality and demagoguery style - but informed by:

- 1) past experiences;
- 2) personal connections; and
- 3) short-term horizons and,
- 4) disregard for legal institutions and processes.

- But the SEA context matters: authoritarian backlash (ie. Intermediate variable)